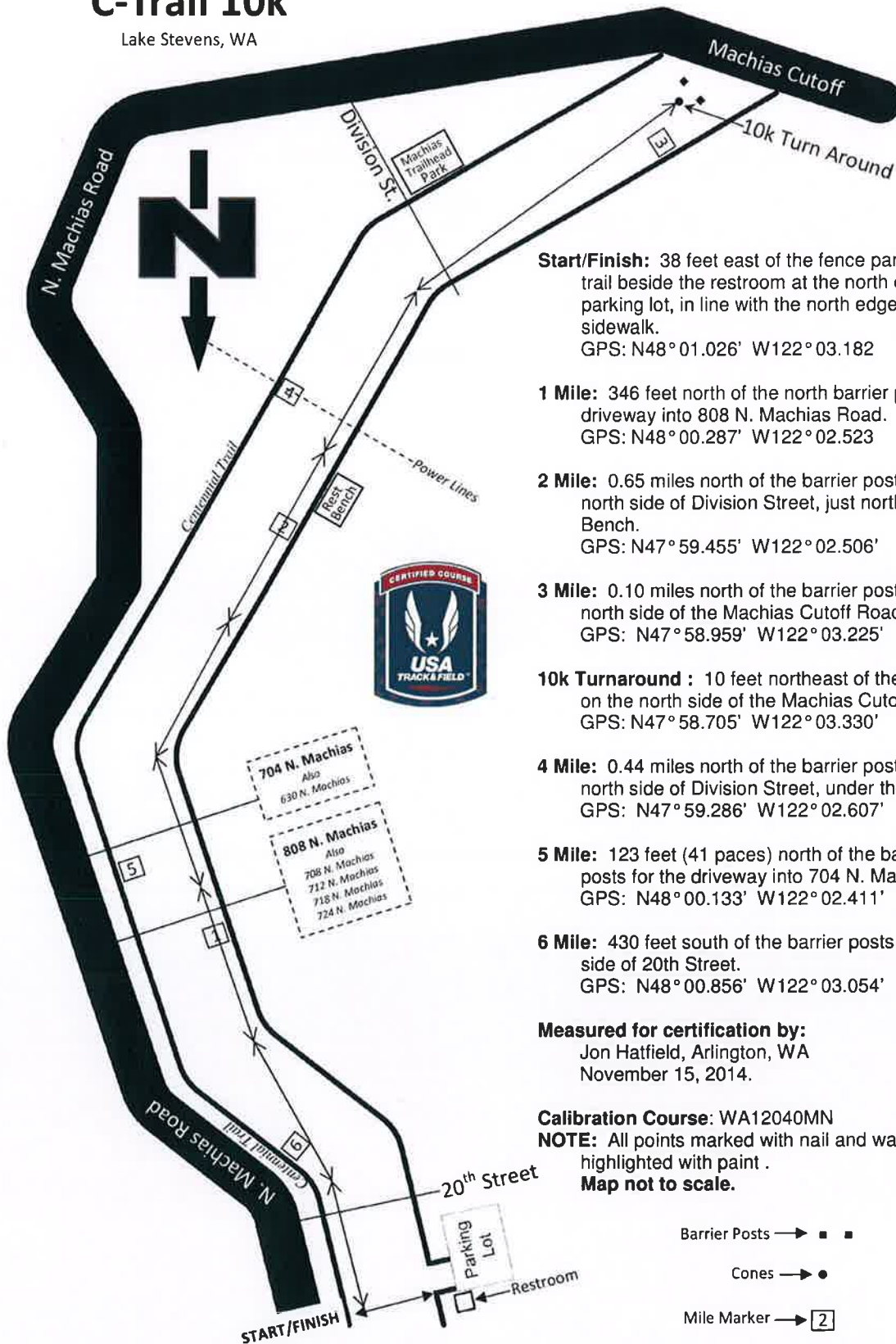


C-Trail 10k

Lake Stevens, WA



Start/Finish: 38 feet east of the fence parallel to the trail beside the restroom at the north end of the parking lot, in line with the north edge of the sidewalk.
GPS: N48° 01.026' W122° 03.182

1 Mile: 346 feet north of the north barrier posts for the driveway into 808 N. Machias Road.
GPS: N48° 00.287' W122° 02.523

2 Mile: 0.65 miles north of the barrier posts on the north side of Division Street, just north of the Rest Bench.
GPS: N47° 59.455' W122° 02.506'

3 Mile: 0.10 miles north of the barrier posts on the north side of the Machias Cutoff Road.
GPS: N47° 58.959' W122° 03.225'

10k Turnaround: 10 feet northeast of the barrier posts on the north side of the Machias Cutoff Road.
GPS: N47° 58.705' W122° 03.330'

4 Mile: 0.44 miles north of the barrier posts on the north side of Division Street, under the power lines.
GPS: N47° 59.286' W122° 02.607'

5 Mile: 123 feet (41 paces) north of the barrier posts for the driveway into 704 N. Machias Road.
GPS: N48° 00.133' W122° 02.411'

6 Mile: 430 feet south of the barrier posts at the south side of 20th Street.
GPS: N48° 00.856' W122° 03.054'

Measured for certification by:
Jon Hatfield, Arlington, WA
November 15, 2014.

Calibration Course: WA12040MN

NOTE: All points marked with nail and washer and highlighted with paint.

Map not to scale.

Barrier Posts → ■ ■

Cones → ●

Mile Marker → [2]